

910 HERMOSA COURT

SUNNYVALE, CA

±86,000 SF AVAILABLE



910 HERMOSA COURT

Central Research Park is in an eight building campus in the heart of Sunnyvale with top-tier office/R&D space. The elegant, contemporary building design offers tenants and visitors alike a premier business environment. A prime location near top universities and research centers drives talent recruitment, project collaboration, and business innovation.

PROPERTY HIGHLIGHTS

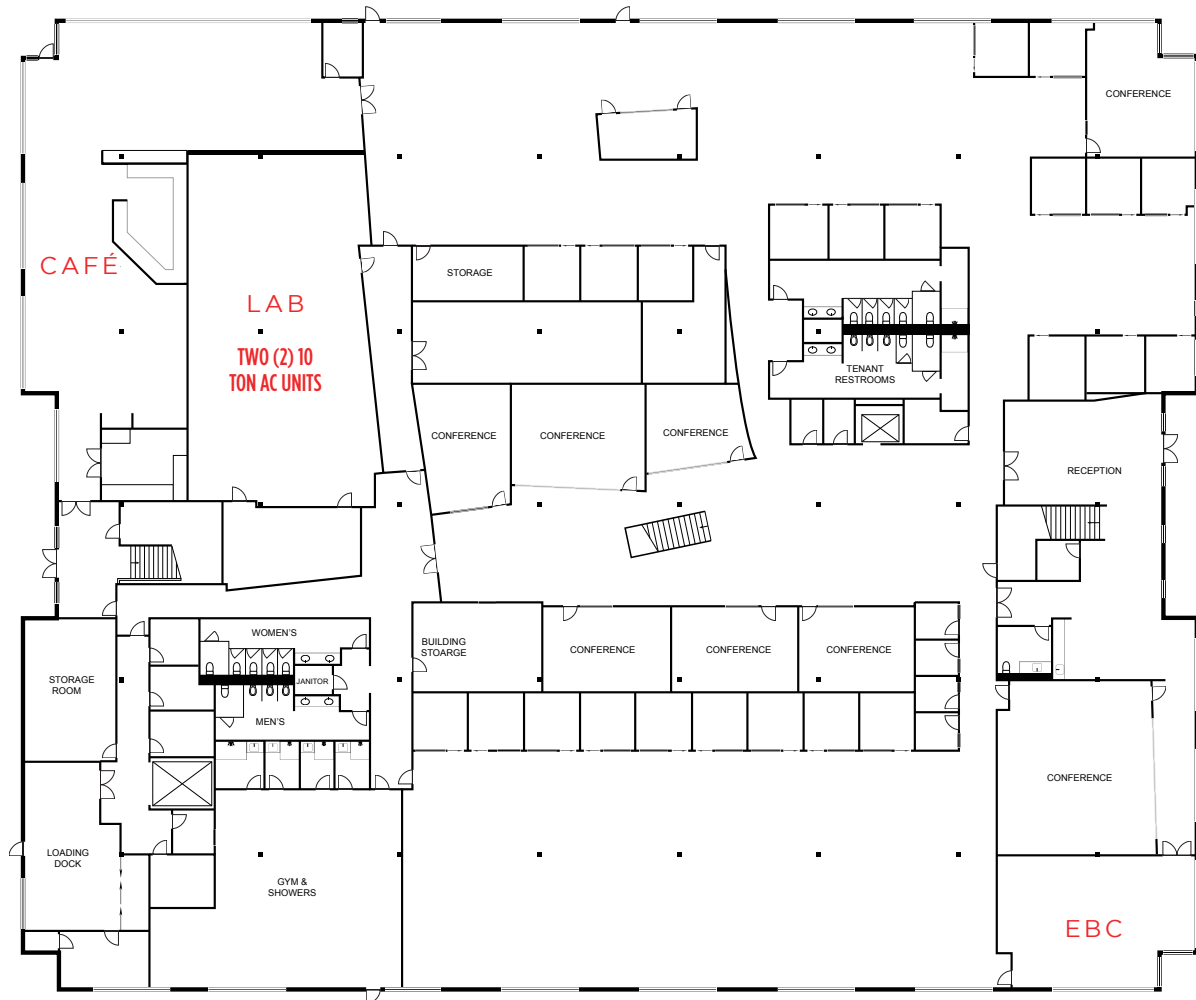
- ±86,000 SF of mixed-use Office/R&D space
- Freestanding location highlights corporate identity along the Central Expressway
- Close to world-class universities and research centers
- Ideal for customers requiring office, storage, and lab space
- Abundant and convenient surface parking
- Minutes to the San Jose International Airport
- Dedicated electrical and HVAC systems with grade-level loading
- Near Sunnyvale Square Shopping Center and Sunnyvale Town Center
- Easy access to Central Expressway, Highway 237, Highway 101, and Route 85



910 HERMOSA COURT

FIRST FLOOR

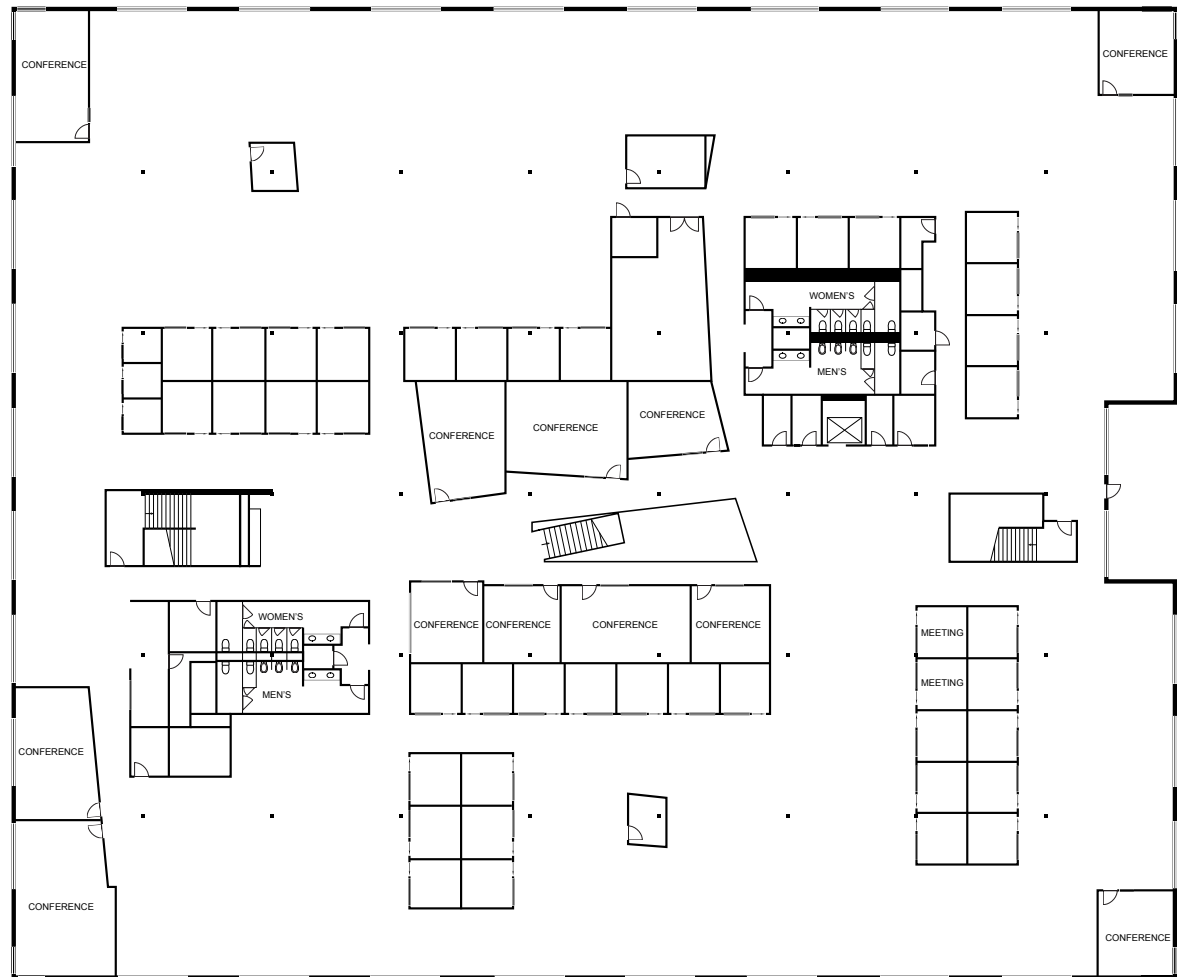
- ±43,000 SF of a mix of private offices, conference rooms, and open space
- Dramatic open staircase connecting first and second floors
- Executive Briefing Center with conferencing and security entrance
- Full Fitness Center with four (4) private showers
- Cafe with serving areas and planned indoor/outdoor seating areas
- Two (2) sets of restroom cores
- Dock and grade loading with freight elevator to second level



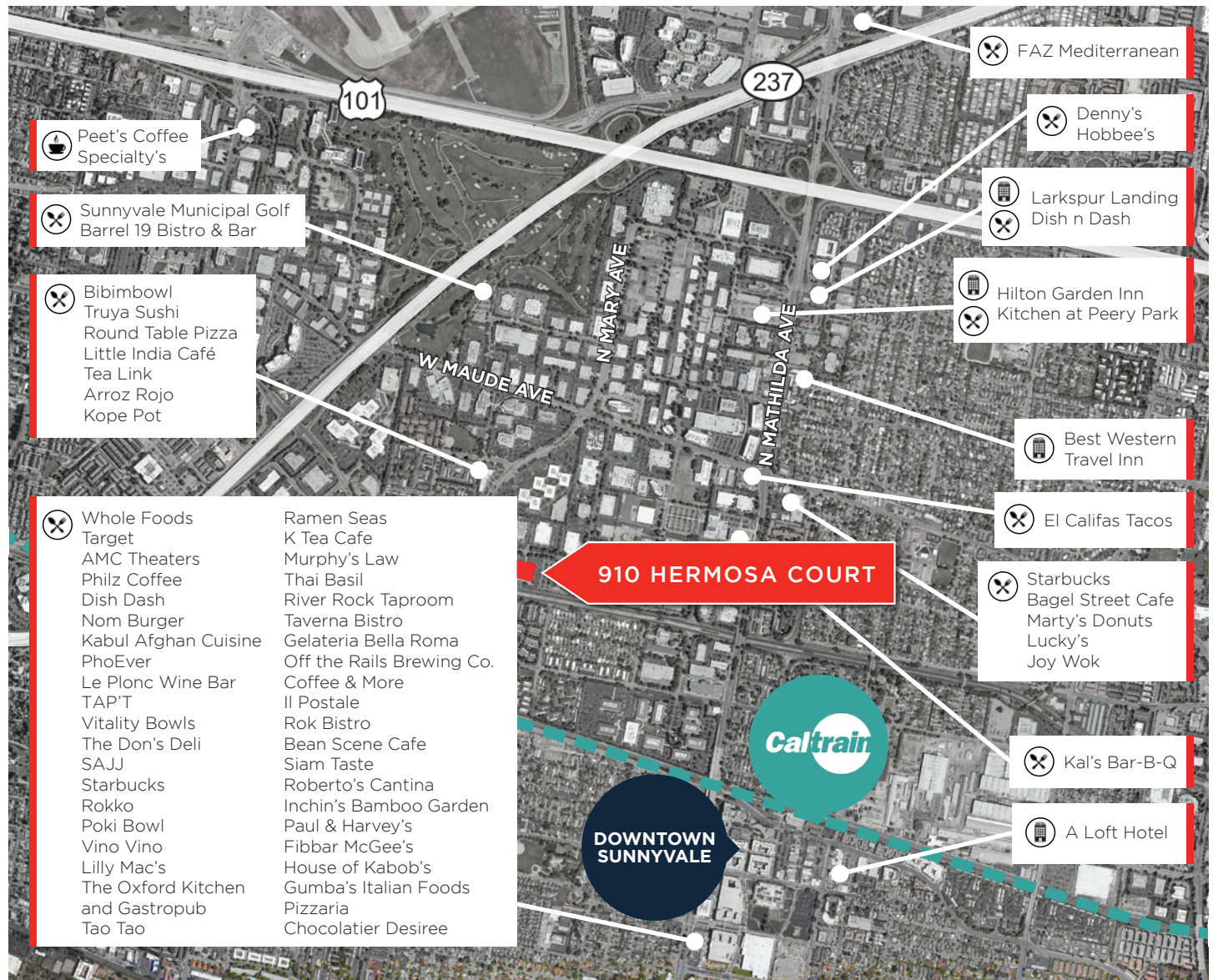
910 HERMOSA COURT

SECOND FLOOR

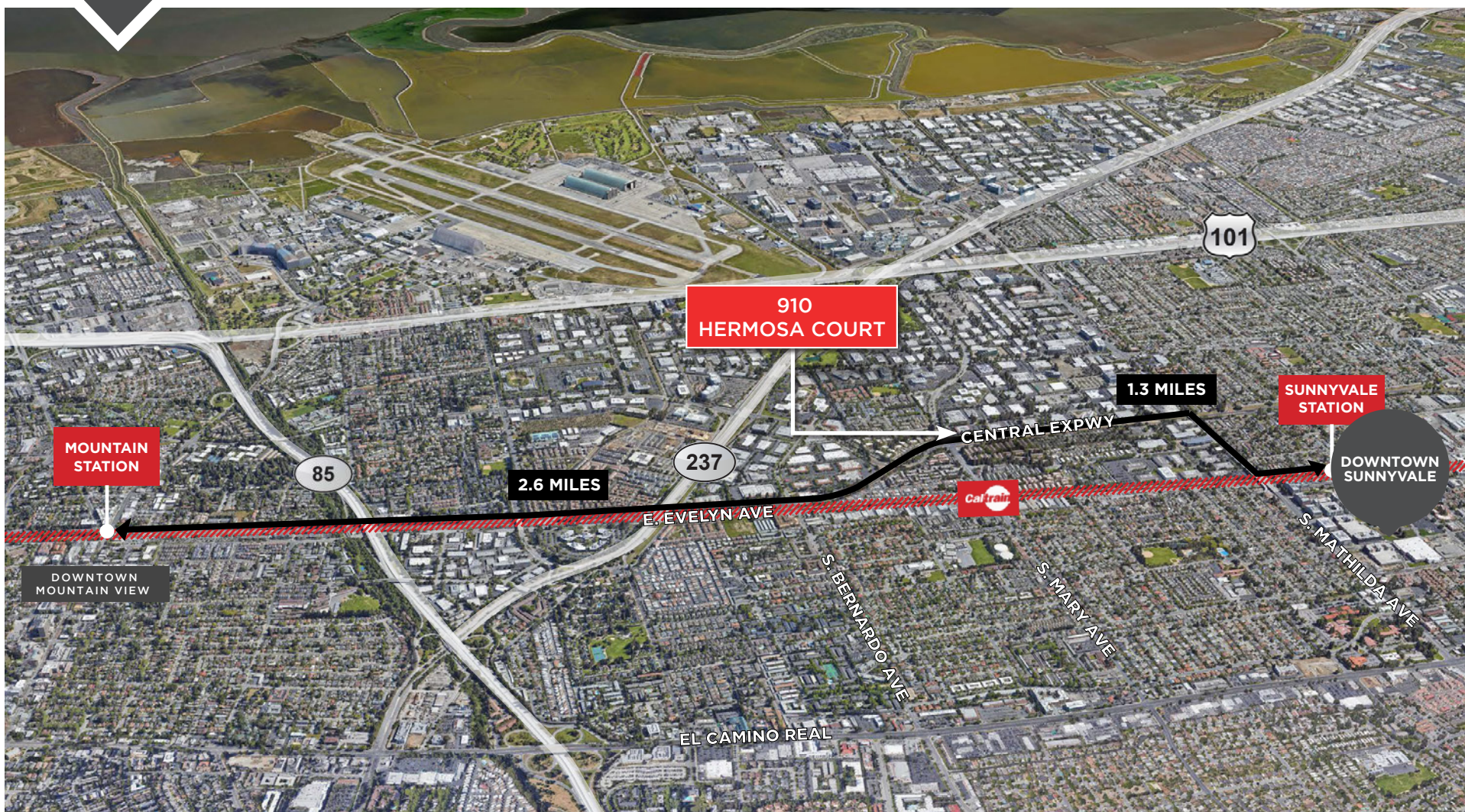
- ±43,000 SF
- Great mix of private offices, conference spaces, and open space
- Multiple break areas for collaboration
- Two (2) full sets of restrooms



NEARBY AMENITIES



TRANSPORTATION



THE PATHS TO WORK ARE CLEAR

CENTRALLY CONNECTED